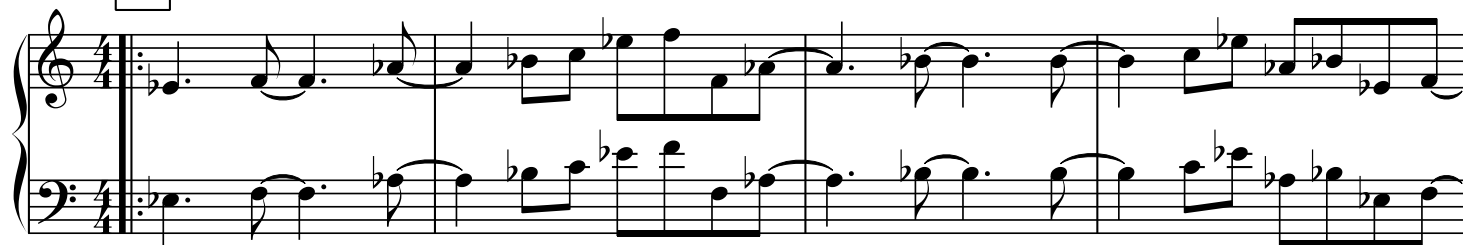


Xpanded

A ♩ = 160

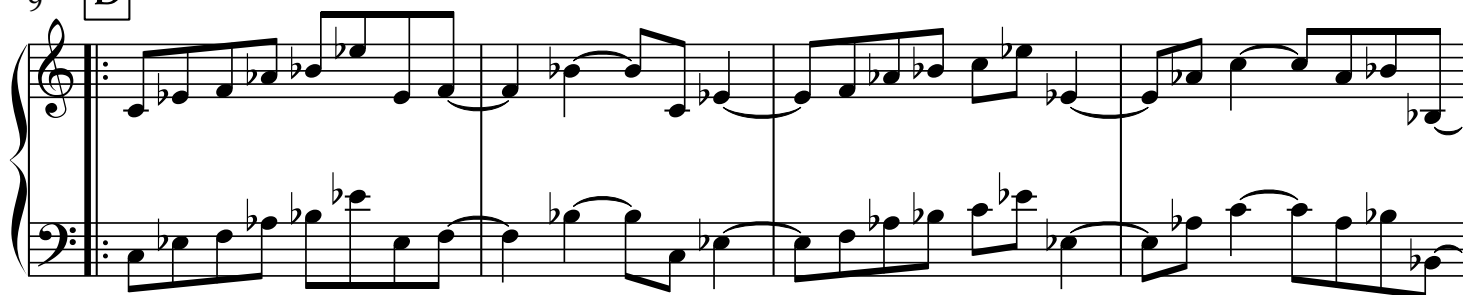


5

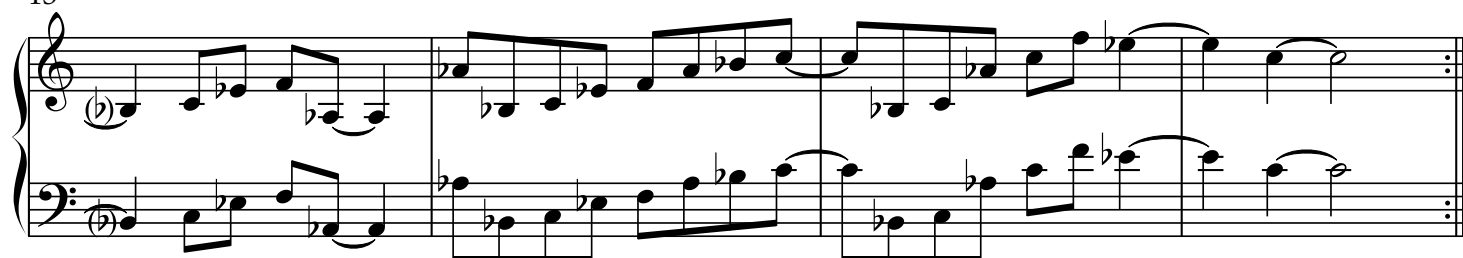


9

B



13



17 C

Measures 17-20. The key signature has two sharps (F# and C#). The melody in the right hand features eighth and sixteenth notes with various accidentals. The bass line provides a steady accompaniment with eighth and sixteenth notes.

21

Measures 21-24. The key signature changes to one sharp (F#). The melody in the right hand continues with eighth and sixteenth notes. The bass line continues with eighth and sixteenth notes. The piece concludes with a double bar line and repeat dots.