

A

ROCKIN

C

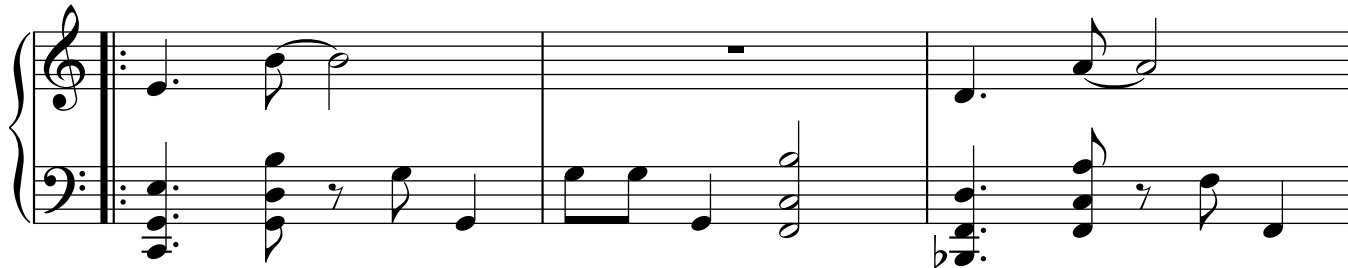
G

FINE!!

F

B \flat

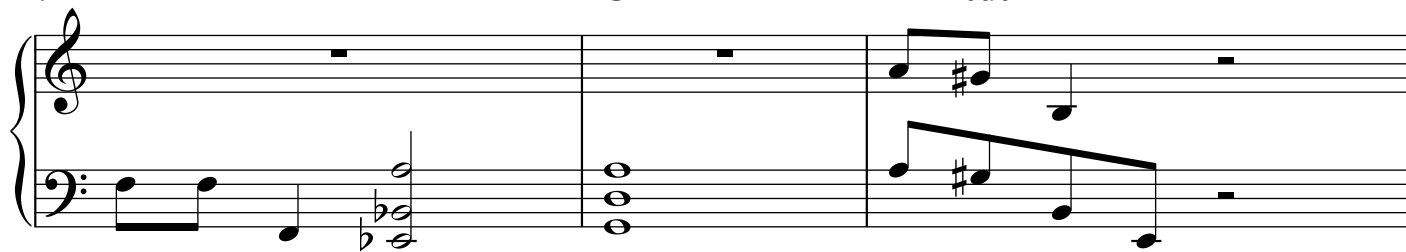
F'



4

E \flat

G

E 7 sus 3 

7

A 6

D/F#

E 6

A

B/F#

F#sus

E 6 /G#

B



11

B

C#- D Δ 7B Δ 7/F#

B

C#- G Δ 7 A \flat -7

15

BA \flat -7/E \flat

C#-

OPEN

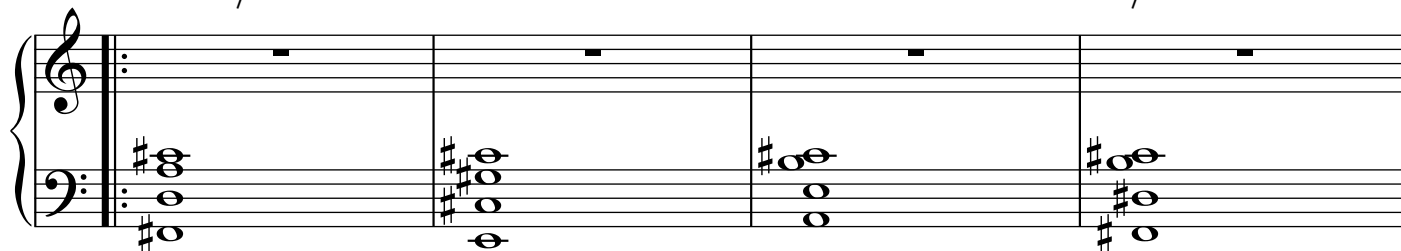
DS



SOLOS

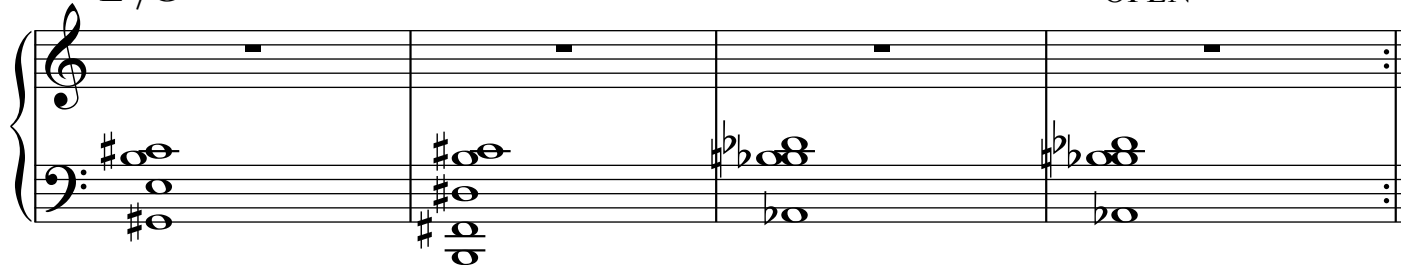
CD/F[#]E⁶

A

B/F[#]E⁶/G[#]

B

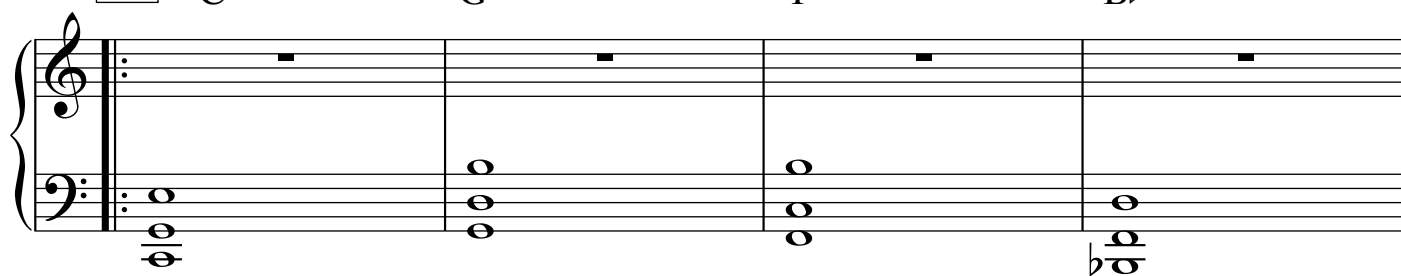
OPEN

**D**

C

G

F

B^bF[#]E^b

OPEN

